



Managing Risk with FleetVision™.

Improving Fleet Operations with AI and Vision Analytics



ShipIn's FleetVision™ unlocks ship-to-shore collaboration and delivers actionable insights into **Navigation, Safety, Security, Technical, and MARPOL** compliance.

Powered by AI, FleetVision offers real-time visual analytics, detecting onboard events from routine maintenance to bridge activity. Our platform instantly notifies stakeholders onboard and onshore of safety breaches, empowering Shipowners, Managers, and Seafarers to foster a proactive culture of safety and compliance.



Case Study I

Learn How Zeaborn Achieved 17% Increase in Bridge Watch Compliance



Case Study II

Shipowner Avoids \$800K Damages in Cargo Contamination Claim

Utilizing FleetVision 3-4 times per week has been instrumental in improving our operations aboard. Through regular reviews of bridge performance with my team and thorough assessments of mooring operations after each departure, we've achieved far greater levels of efficiency and safety. What's most remarkable is the positive shift I've observed in the crew's engagement and performance since implementing FleetVision. It is a transformative tool that fosters a culture of continuous improvement and teamwork that has truly elevated our standards."

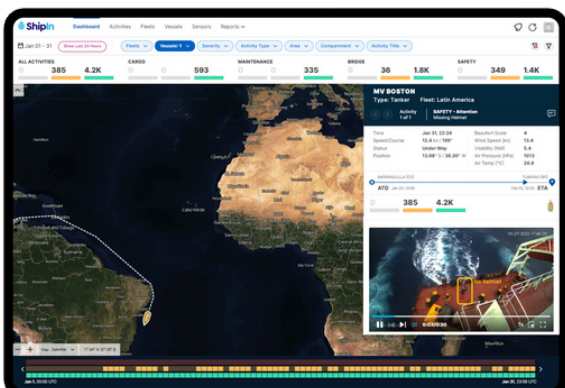
Master of Federal Dee, Fednav



A data-driven approach to decision-making across your maritime operations.

First-in-class: Our system processes a staggering 1 billion images per day.

This vast data collection significantly enhances our model's accuracy and system robustness, setting a benchmark that is extremely difficult for competitors to match.



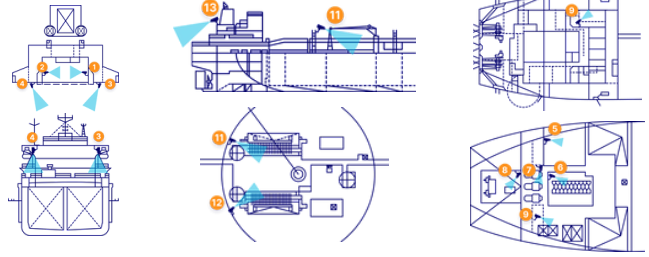
1,000,000,000
images
processed daily

20,000
activities
onboard daily

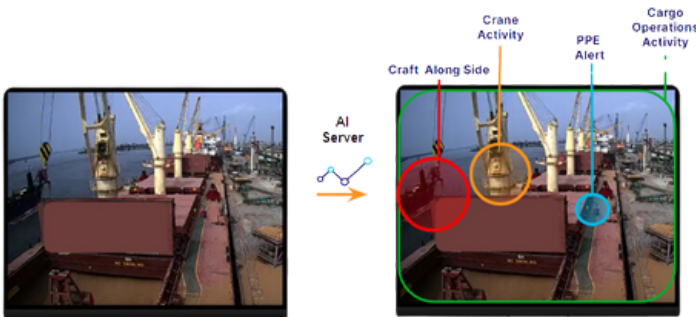
1. Capture Visual Information



No CapEX, fast deployment. FleetVision can be installed at any time with the vessel operating commercially within weeks of subscribing to the platform. Once installed, you will gain visibility into all critical operations onboard.



2. AI Identify What Matters

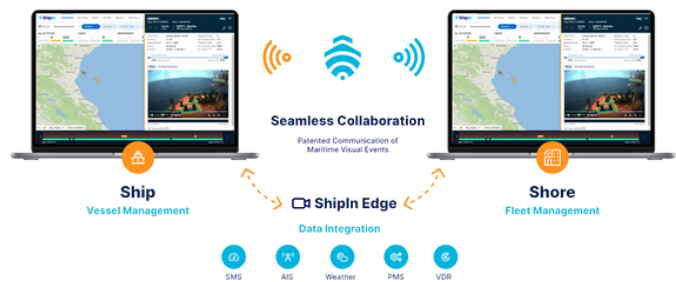


On-vessel computer vision systems transform 10,000 hours of monthly footage into real-time intelligence and analytics.

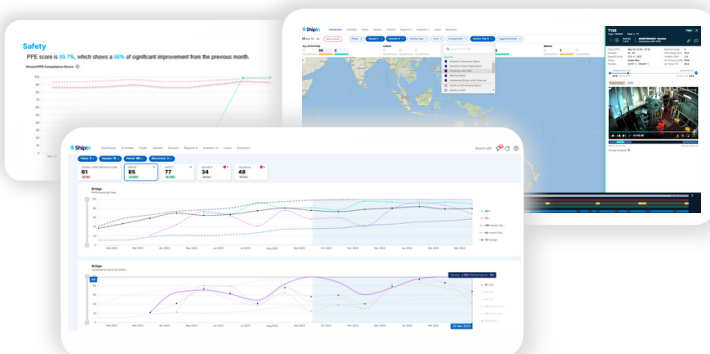
3. Ship-Shore Collaboration



The AI Edge server onboard digests all video in near real-time and integrates multiple sources of data including weather, location and operational status to deliver contextual notifications and analytics.



4. Quantifying Safety



The world's first Fleet Excellence Score helps you better understand performance across vessels, combining data into an overall score to optimize your operations and train crew to minimize risk and to empower the Captain to be the 'CEO' of the vessel

About Shipln Systems

Shipln Systems is the world's first FleetVision™ Platform, unlocking ship-to-shore collaboration for maritime fleets with visual analytics. Shipln's platform proactively alerts shipowners, managers, and seafarers to onboard events in real-time, reducing losses by 40% and increasing efficiency by 8%.

Creating a digital bridge between ship and shore, Shipln provides objective insights into navigation, security, cargo operations, and more. With all monitoring rolling up to an analytics dashboard, the platform makes it easy to benchmark performance, perform remote audits, and improve the operational ROI of your entire fleet. Shipln is trusted by global industry leaders including Anglo Eastern, CMA CGM, International Seaways, Fednav, Ardmore, Laskaridis, Rio Tinto, Tufton and others.

About NorthStandard

NorthStandard provides an unmatched breadth and depth of service that supports operations, embraces potential, and helps your business thrive.

With the largest product range in the International Group, NorthStandard offers over 10 bespoke options, including P&I, FD&D, Hull & War, Offshore & Renewables, Strike & Delay, and more.

The company's approach to underwriting, claims, and loss prevention is built on an unwavering commitment to transparency, flexibility, expertise, and speedy resolution. The dedicated team, with years of expertise in maritime operations, also offers invaluable insight to mitigate losses and reduce costs.

Special Offer

NorthStandard members can take advantage of this special partnership with access to an exclusive offer on Shipln Systems' platform. For more details about this offer and its benefits, visit north-standard.com/shipin.

For additional information, please contact:

Gal Sagy

VP, Growth
Shipln Systems
galsagy@shipin.ai
+1 857 891 2567

Colin Gillespie

Global Head of Loss Prevention
NorthStandard
colin.gillespie@north-standard.com
+44 7816019608

Request a meeting:

<https://meetings.hubspot.com/gal-sagy>