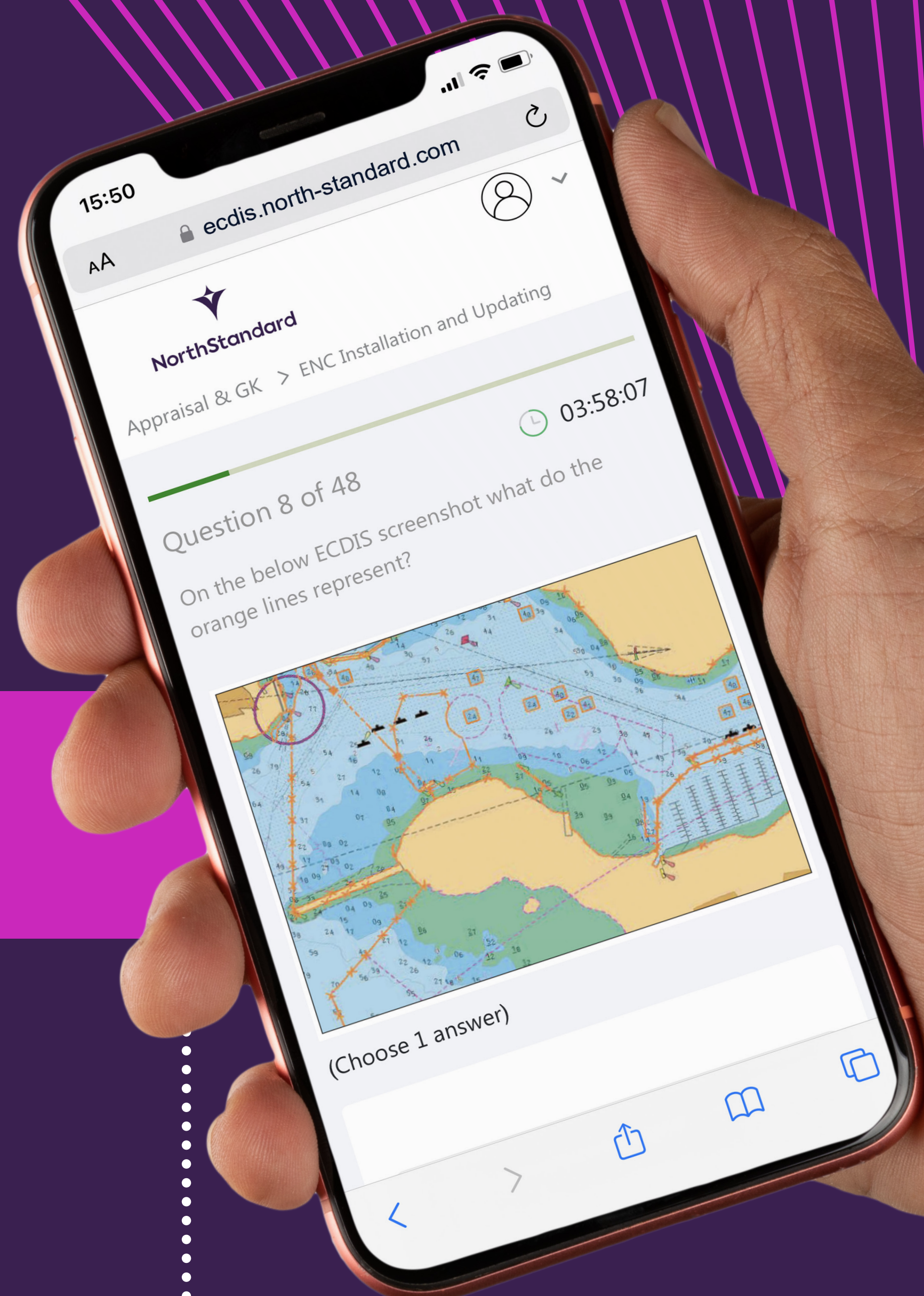


ECDIS

Training Assessment (ETA)
- Learning from the Data



Key takeaways

There are **wide knowledge gaps** identified across all bridge teams assessed

20-45%

of responses were incorrect

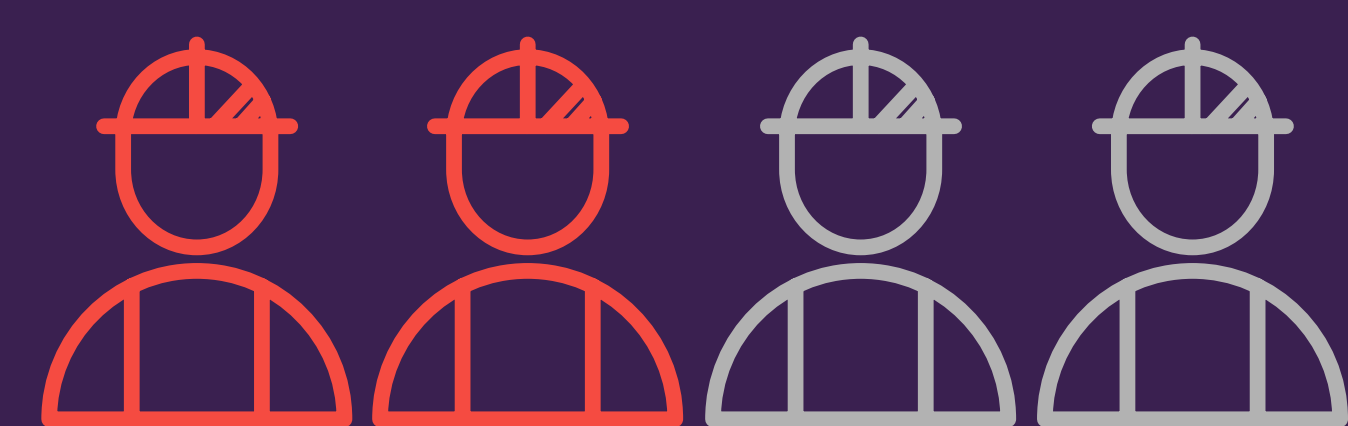
across all four passage planning pillars, signalling significant gaps in knowledge

Appraisal

Planning

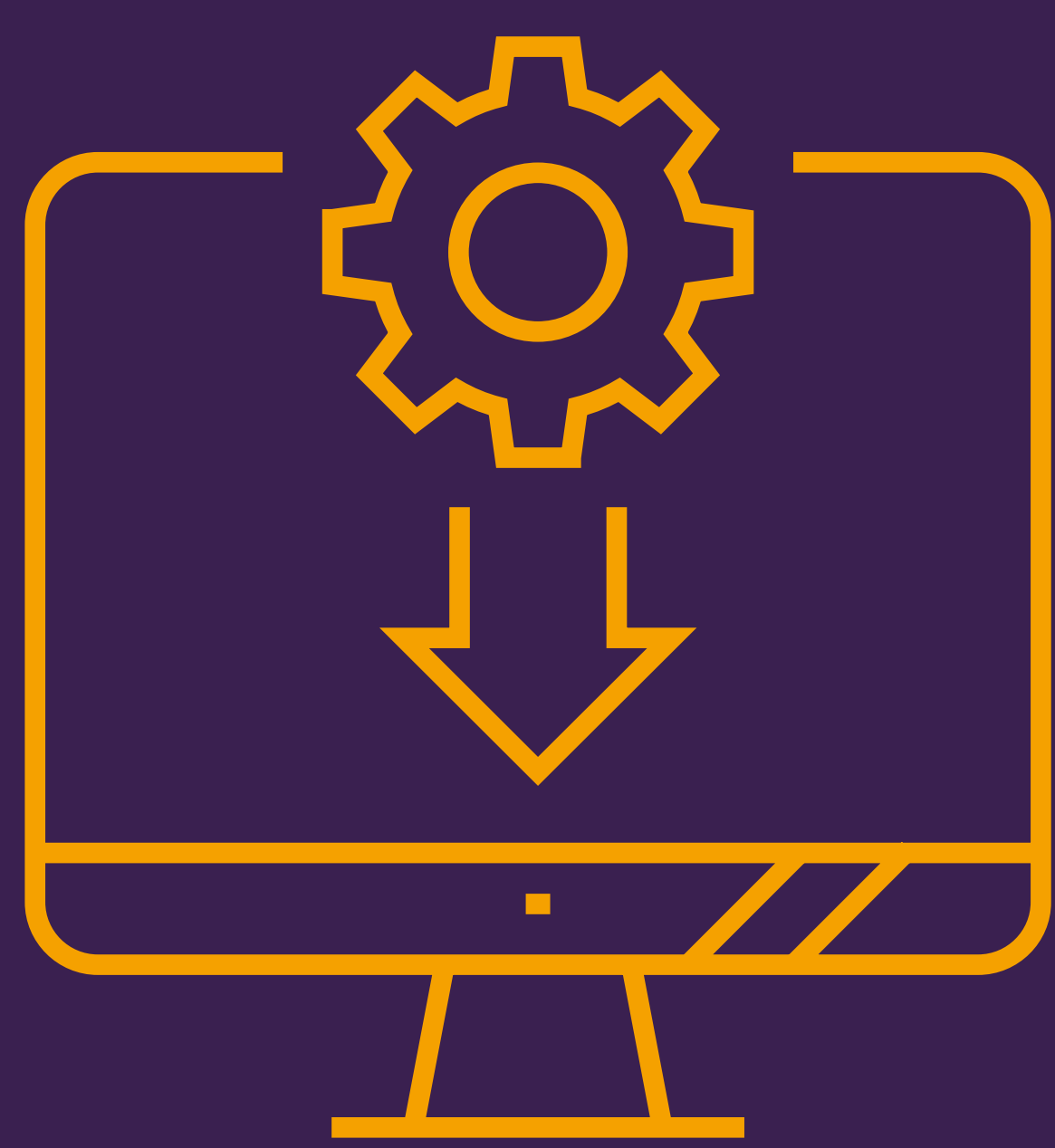
Execution

Monitoring



Nearly half

of the crew assessed failed to prioritise the correct ENC scale, risking missed hazards



Many of those assessed had **knowledge gaps** with regard to **installing and updating ENCs**

Another potential knowledge gap was **a lack of understanding of datums**

and their impact on positional accuracy



Many users **misunderstood the correct use of safety settings**

such as how the available charted depth contours impact the safety contour



Around half

could not distinguish between alarms vs alerts/highlights



NorthStandard

Read the full report at
north-standard.com